



KAGES NEWSLETTER

WWW.KAGES.ORG

한미 지리정보 및 환경과학 협회 소식지

발행인: 조인정 편집: 이지은

From the President	1	KAGES 2022 Annual Meeting	8
KAGES Forum	2	IJGER	9
Explornig Field	3	KAGES Grant and Sponsorship	9
KAGES Ethics Council	5	Members' News	10
KAGES Awards & Scholarships	8	About KAGES	11

From The President

회장 인사말



KAGES 회원 및 후원자 여러분 안녕하세요?

계속되는 코로나로 지난 한 해도 고생 많으셨습니다. 2022년 새해에는 항상 좋은 일 가득하신 행복한 한 해가 되시길 진심으로 기원합니다.

여러분들의 지속적인 관심과 도움으로 KAGES의 주요

사업들, 특히 학생 회원님들을 위한 각종 장학 사업 및 멘토링 프로그램은 올해도 꾸준히 진행되고 있습니다. 지난 봄에 조직된 Future for Women Geographers (FWG)를 시작으로 많은 학생 회원님들이 KAGES 학생 소모임 프로그램에 관심을 보여주고 계셔서 앞으로의 발전이 기대됩니다. 그리고 올 가을부터 운영중인 KAGES 윤리 위원회도 (KAGES Ethics Council) 도움이 필요하신 회원님들을 위해 문을 활짝 열고 기다리고 있습니다. 이 자리를 빌어 위원회에서 봉사해 주시는 반효원, 심선희, 안기철, 윤혜진, 차호섭, 최운섭, 홍정은 선생님께 감사의 말씀을 전합니다.

이 밖에도 KAGES가 회원님들의 다양한 요구 및 필요에 조금이나마 도움을 드리고자 새롭게 시작한 두 가지 사업이 있습니다. KAGES 학생 소모임 조직 및 모임 구성원들의 다양한 커리어 개발 활동을 지원하기 위한 Student Affiliated Group Mini-Grant 프로그램, 그리고 일반 회원님들의 리더십 아래 진행되는 다양한 활동을 지원하고자 마련된 KAGES Sponsorship 프로그램입니다. 관심 있는 회원님들의 문의와 지원, 언제나 환영합니다.

AAG 일정이 예년에 비해 많이 앞당겨져서 AAG 연례 미팅에서 열릴 총회 및 세션 안내를 조금 일찍 드리게 되었습니다. 2022년 KAGES 총회는 동부 시간 2월 27일 오후 7시에 (한국 시간 2월 28일 오전 9시) 개최됩니다. 총회와 총회 직전에 열릴 Young Korean Geographers Forum 1, 2 및 멘토링 세션은 모두 비대면으로 진행될

예정이며, 정확한 일정 및 세션 내용 등의 안내는 차후 이메일 및 KAGES 홈페이지를 통해 자세히 알려드리도록 하겠습니다. 이번 총회에서는 Student Paper Award 와 Sim Travel Award 수상자도 발표될 예정입니다. Student Paper Award 를 후원해 주신 대한지리학회와 (The Korea Geographical Society: KGS) Sim Travel Award 를 후원해 주신 심선희 선생님, 그리고 바쁜 시간 쪼개어 수상 후보들을 리뷰해 주신 권영상, 박유민, 최영래, 정진규, 이진형 선생님께 깊은 감사의 마음을 전합니다. KAGES 총회는 다음 해에 KAGES를 위해 봉사해 주실 회장단 선거 및 선거 결과를 발표하는 자리이기도 하니, 꼭 참여하셔서 여러분의 의견을 나누어 주십시오. 마지막으로, 올해 총회에 참석하시는 모든 분들께는 감사의 표시로 \$10의 e-gift 카드를 보내 드릴 예정입니다. 후원해 주신 재미 한인 과학 기술자 협회에 (Korean-American Scientists and Engineers Association: KSEA) 감사드립니다.

회원님들의 참여가 KAGES 발전의 원동력입니다. KAGES에 대해 궁금하신 점이 있으시면 언제든지 연락 주십시오 (ijo@txstate.edu). 건강하시고, 2022년도 KAGES 총회에서 모두 만나 뵈실 수 있길 고대하겠습니다.

2022년 1월 조인정 드림

Dear KAGES members and sponsors,

I hope this year grants you everything you wish for and brings you success from every direction.

With your support, KAGES has launched two initiatives in 2021: Student Affiliated Groups and KAGES Ethics Council. KAGES is also offering two new programs, Student Affiliated Group Mini-Grant and KAGES Sponsorship. I believe that these initiatives will serve members of KAGES greatly in the coming year. My sincere thanks go to the Board for their hard work developing the new programs and to the Ethics Council members for their voluntary service to set the foundation of this critical endeavor.

The 2022 KAGES General Meeting will be held via Zoom on February 27 from 7:00 to 8:00 p.m. (EST)

during the Annual Meeting of AAG. The KAGES Award ceremony will be followed by the General Business meeting. I appreciate all sponsors of the awards: Dr. Sunhui Sim for the Sim Travel Award and the Korea Geographical Society for the Student Paper Award. All reviewers of the awards—Dr. Youngsang Kwon, Dr. Yoo Min Park, Dr. Young Rae Choi, Dr. Jin-Kyu Jung, and Dr. Jinhyung Lee—also deserve appreciation. Prior to the General Meeting, KAGES will present two virtual sessions. Drs. Kyung-In Huh and Hyejin Yoon have organized Young Korean Geographers Forum 1 & 2 and KAGES Mentoring Session (February 27, 3:40-5:00 p.m. and 5:20-6:40 p.m., respectively) that will offer members excellent opportunities to learn new research from members and network. Details of these events are posted on this newsletter, the KAGES website, and the official KAGES Twitter account. Supported by KSEA, a ten-dollar gift card will be presented to all members who attend the General Meeting. I am looking forward to seeing you all there.

Please contact me (ijo@txstate.edu) anytime if you have any questions about the KAGES programs and events. I appreciate all your support for KAGES.

Sincerely,
Injeong Jo, January 2022

KAGES Forum

환경과 지속가능한 발전을 위한 미래 예측 분석



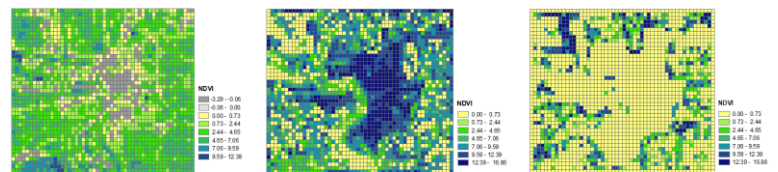
전범석
(Bumseok Chun)
Associate Professor
Department of Urban Planning
& Environmental Policy
Texas Southern University

최근 미래 지속 가능한 환경 및 토지 이용과 관련된 장기적인 정책에 대한 필요성이 다양한 분야에서 강조가 되고 있다. 특히 기후 변화와 대기오염은 가장 심각한 환경문제로 인식이 되고 있다. 전 세계적으로 최근 극심한 폭염과 미세먼지 농도의 증가가 관측되고 있으며, 이로 인한 피해도 많이 보고가 되고 있다. 이는 보건과 에너지 산업에 영향을 주고 있으며, 향후 다음 세대까지 유해한 영향을 줄 수 있는 부분이 발생한다. 이러한 환경 문제는 2020년 경찰의 과잉 진압으로 사망한 조지플로이드(George Floyd) 사건에서

시작된 사회-환경 포용정책 (Social and Environmental Justice)과도 깊은 연관성을 지을 수 있다. 즉, 저소득층과 같은 사회적 소외 계층은 상대적으로 더욱 심각한 피해를 입고 있다. 이와 같이 기후변화와 대기오염 관련 문제는 우리 사회에 전반적으로 영향을 미치고 있다.

이와 관련하여 필자는 도시 환경에서 쉽게 접할 수 있는 열섬 현상, 교통 이동량과 관련된 미세먼지에 대한 연구를 3차원 공간 빅데이터 활용과 함께 진행하며 관심을 지속적으로 가지고 있다.

도시 열섬현상에 대한 연구는 크게 다섯 분류로 나뉘어서 진행이 되었고 또한 진행 중이다. 첫 단계로 도시 환경 인자 (도시 협곡, 녹지분포, 수변환경, 불 투수 지역 등) 를 고려한 열섬 분석이 공간통계를 기반으로 이루어 졌으며, 이를 통하여 연구를 발전시켜 나갔다. 이 결과는 모두가 예상가능한 것으로 일반적으로 녹지, 수변환경은 온도 저감 현상을 유도하였고, 도시 협곡은 그와 반대로 도시 온도를 증가시키는 인자로 나타났다. 두 번째 단계로는 과연 이런 도시 환경 인자들의 영향이 낮과 밤에 따라 어떻게 달라지는가에 대한 연구를 진행하였다. 결과적으로 낮 시간대에는 녹지, 수변, 그리고 도시 협곡은 열섬 저감 현상에 기여를 하였다. 특히 고층건물들의 음영은 낮 시간동안 긍정적인 결과를 유도하였다. 그러나 밤시간대에 도시 협곡 현상은 정반대로 바람길의 방해와 함께 도시 온도를 증가하는 인자로 나타났다. 세번째 단계에서는 보다 확장된 시계열분석으로 도시열섬 저감을 위해 제안된 녹지가 사계절에 따라 어떻게 도시 온도에 영향을 주는가에 대한 시뮬레이션에 초점을 맞췄다. 여름에는 그 효과가 극대화되어 나타났고, 봄과 가을에는 그 보다는 적게 온도 절감 효과를 보였다. 그러나 겨울에는 오히려 온도를 약간 상승시키는 효과를 나타냈다. 이 연구는 적절하게 녹지분포를 이용하게 되면 사계절동안 효과적으로 열섬과 관련된 도시온도에 대응할 수 있는 기회를 가질 수 있다는 것을 보여준다. 네 번째로는 녹지분포 설계에 대한 최적화 분석을 하였다. 이전의 연구들은 녹지효과의 시나리오 분석을 위하여 시각적으로 판단하여 설계를 하였다. 허나 최근 도시 및 지리학 분야에서 급부상한 Artificial Intelligence (AI) 혹은 Operations Research (OR)과 같은 최신 연구 기법 (이미 공학분야에서는 이전부터 많이 연구되고 사용됨)을 이용하여 온도 절감을 위한 최적화된 녹지분포를 적용하였다. 그림 1은 NDVI를 이용한 최적화된 녹지분포를 지표면의 녹화와 옥상녹화로 구분하여 나타내고 있다.



(a) 기존의 녹지분포 (b) 최적화된 지표면의 녹지분포 | (c) 최적화된 옥상정원 분포

그림 1. 콜럼버스 오하이오의 열섬 저감을 위한 녹지 최적화 패턴

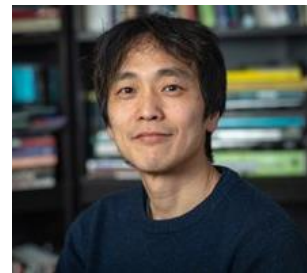
특히 본 연구에서 Multi-objective optimization 을 이용하였으며, 실질적인 경제적인 측면도 고려하여 연구를 진행했다. 현재는 이전의 모든 연구들을 기반으로 궁극적으로 우리가 살고 있는 사회와 연결을 지어서 온열 질환과 관련된 환경 역학(Epidemiology)을 기반으로 저소득층의 열환경을 개선하는데 연구를 진행하고 있다. 또한 Father of Environmental Justice 로 불리는 Dr. Robert Bullard 가 만든 Bullard Center for Environmental and Climate Justice 에서 지원을 받으며 최근 연구 범위를 넓히고 있다.

대기 오염에 대한 연구는 미국 교통청 (US Department of Transportation)에 의해서 운영되는 University Transportation Center (UTC) 프로그램으로부터 지원을 받고 있으며 University of Texas at Austin, University of Pennsylvania, Louisiana State University 와 함께 컨소시엄 형태로 프로젝트가 진행되고 있다. 본 연구의 주목표는 화물 운송과 일반 차량의 운행 패턴 (Travel Demand Modeling)을 기반으로 이들이 대기 환경에 주는 영향 평가에 있다. 오스틴, 달라스, 샌 안토니오, 그리고 휴스턴 메트로를 포함하는 텍사스 트라이앵글 전체를 연구 지역으로 커버하고 있으며, 각 지역의 MPO와 긴밀한 협력을 통하여 의사결정 시스템을 구축하고 있다. 그림 2는 텍사스 트라이앵글에 위치한 위에서 언급한 네 도시들간 교통량의 흐름을 모델링을 이용하여 예측한 결과를 보여준다. 일반차량의 흐름은 도심지 내에서 집중된 것으로 예측이 되고, 화물 운송에 대한 흐름은 도심지 외곽 그리고 도시간의 Interstate 에서 상대적으로 높게 예측이 되었다. 이는 당연한 결과이나 이를 이용한 연구의 잠재성은 무궁무진하다. 일례로 현재 진행중인 AI 를 이용하여 미세먼지, 교통량, 그리고 도시 구조와의 관계에 대한 이해, 그리고 이를 기반으로 자율주행 모빌리티와 녹지가 미세먼지에 미치는 미래 영향 예측을 하기 위한 시나리오 분석을 하는데 있어서 기초 자료로 사용이 되고 있다.

휴스턴 사회-환경 포용정책과 관련하여 Bullard Center for Environmental and Climate Justice 에서 United States Environmental Protection Agency (US EPA) Administrator 인 Michael S. Regan 과 함께 현재 바이든 정부와 EPA 가 추구하는 방향에 대해서 서로의 의견은 교환하고 토의하는 기회가 있었다. 분명 현 정부는 Green-

Clean 에 초점을 맞추어서 저소득층의 삶의 질을 향상시키는데 무게를 두고 있음을 확인할 수 있었고, 또한 학계에서 이루어지고 있는 연구들을 과연 어떻게 상용화할 것인지에도 관심을 두고 있다는 것을 느낄 수 있었다. 본인은 Emerging Technology 를 사용해서 다양한 연구를 하고 있으나, 과연 이 연구의 결과물들이 어떻게 실질적으로 정책화가 되거나 의사결정 과정에 반영이 될 수 있을지 생각을 하게 된다. 즉, 단지 논문을 위한 연구를 하지는 않는지, 아니면 연구비나 연구제안서를 위한 연구를 하고 있지는 않는지, 그 누구도 흥미롭게 보지 않는 연구를 하지 않는지에 대한 생각을 하며 뒤를 돌아보게 되는 좋은 계기를 가지게 되었다. 모든 학문은 나름대로의 의미와 가치가 있으나, 실질적으로 이용가치가 떨어지게 되면 그 어떤 학문이라도 관심이 떨어지게 되며 도태되기 마련이다. 이 글을 읽는 독자들도 연구 주제나 방향이 사회에 기여를 할 수 있는지, 아니면 그 가능성이 있는지를 생각하면서 “So Now What”이라는 질문을 매번 본인에게 던지면서 연구를 진행하면 좋은 결과가 있을 것이라 생각한다.

Exploring Field Mapping haunted data: Creative geographic visualization



정진규
(Jin-Kyu Jung)
Associate Professor
School of Interdisciplinary
Arts & Sciences
University of Washington
Bothell

Creative geographic visualization is situated at the intersection of geography, arts, and digital humanities with a particular emphasis on visualization and mapping that preserves, represents, and generates more authentic, contextual, and nuanced meanings of space and people with an artistic and humanistic perspective and approach. This is a creative expansion in critical and qualitative GIS practices, and a new alternative to traditionally science-rooted approaches to GIS and mapping (Cope and Elwood 2009; Hawkins 2017; Schuurman 1999). This essay will be partly a theoretical reflection on the idea of haunted data and partly a sharing of my ongoing interdisciplinary collaboration with Ted Hiebert (University of Washington), an art scholar of digital culture and artistic practice. It is less concerned with being received as

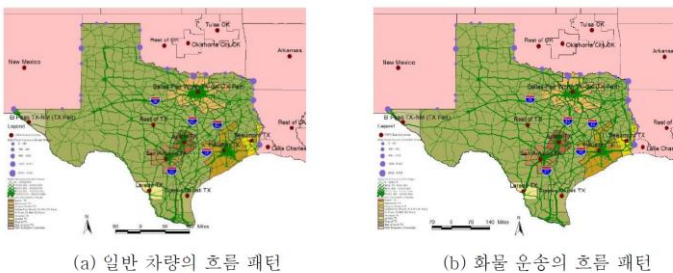


그림 2. 교통량 패턴

Note. These images are from “Develop a GIS-based Megaregion Transportation Planning Model”, by Qisheng Pan and Bumseok Chun, 2020. <https://trid.trb.org/view/1767534>

legitimate art or science and more with opening up conversations about the complexities of data (lives and afterlives) and the way that occult information forms a necessary component of inhabited landscape, and creates a space where we re-imagine where and how mapping and GIS is practiced.

Ghosts are everywhere; we just don't see them. But what if we could see them—or at the very least, what if we could see that we aren't seeing them? This would be to suggest a negative or speculative form of vision that does not reductively constitute appearances based on optical reflection but rather one that understands the multifaceted nature of presence and thus attempts to cohere projections based on available data without precluding complex, speculative, historical, or imaginary manifestations that may be co-existent with those things we can actually see. It is a psychogeographic provocation (kanarinka 2006; O'Rourke 2013) in reverse: not the insistence of an affective quality to the experience of space itself but on a diversity of psychological modes of apprehension that—taken together—will mean a space is always already inhabited by possibilities of encounter just waiting to be seen or felt.

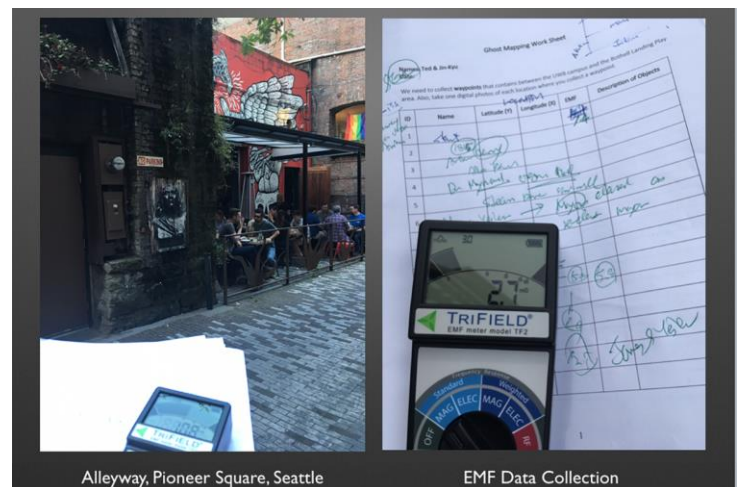
There is a city buried beneath the city of Seattle—a first and failed attempt at urban geography that burned down over 100 years ago. The Seattle Underground, as it is called, is the remnants of this older city, which is both a site of history and a popular tourist attraction—a geography charged with the trauma of urban crisis and the pleasure of vacation indulgence in equal measure.



We took the tour, photographing the hidden city along the way, in ways that make clear that this city is a museum of itself. A guide adds colorful stories of local history, from overhead beams to old storefront, including a tin Victorian bathtub beneath the Pioneer building, an old mission which through the years metamorphosed into a brothel flourished at that time

and a restored 1885 print shop turned into the small Underground Tour Museum and a gift shop displaying historical photos of Seattle portray the life before the Great Seattle Fire of 1889. It feels less like a walk through an old basement and more like a curated visit to an urban excavation site.

We also took readings from an Electromagnetic Frequency (EMF) device, a ghost-hunter's device used to measure unusual magnetic or energetic frequencies. The device didn't really tell us anything, but in not telling us anything also told us a lot—since the real ghosts in this tour are not there to be seen but are those we bring with us in our own imaginations. There may well be buried ghosts in these spaces—the history of Seattle is filled with violence of many sorts—but noticeably absent from our EMF readings are the presences of such entities. They exist in the words of the tourist guides however, and in the imagination of the spectators.



As many other geographers would do, I believe that everywhere(thing) can be mapped, and as such, the EMF can be a marker of something we can't really see but that can nonetheless be gathered for 'mapping'—representative of the geography of the haunted in a visualized form. EMF readings may allow us to measure, record, and map invisible. The collected EMF data are linked to the waypoints that have geographic coordinates. A historical map of downtown Seattle was acquired and digitized and overlaid with EMF data points. EMF (haunted) data points are spatially interpolated, and then transformed into the representation of a (haunted) surface, first using Inverse Distance Weight (IDW) to render a 2-dimensional heat map, then rendered in 3-D in ArcScene (see the image below).

A post-representational or non-representational perspective on mapping re-theorizing maps as 'process-based' and 'performative' rather than 'representational.' (Caquard 2015; Kitchin et al. 2013)



It is a denial of the ontological security of the map, and a celebration of maps being [always] of-the-moment; fleeting, contingent, relational and transitory. Maps are not regard as fixed and finished, but rather, as continuously changing and evolving, from ontology (what things are) to ontogenetic (what things become)—ontogenetically insecure. Non-representational mapping is an overarching term for a diverse range of creative geographic practices, such as more-than-textual, more-than-human, and multi-sensual (Cresswell 2012), in which geography, art and humanities proffer the potential to think and practice space, geography and representation differently.

Mapping haunted data depicts a limitation and a possibility of representation; it gives attention to the emergent, transformation, psychogeographical and performative possibilities of maps—think about the space as a sensuous and imagined realm, that is lived, performed and expressed, imagined and even 'haunted.' GIS and mapping become creative as they continue evolving in process, and it is time that we deeply (re-)imagine the creative of GIS and geovisualization in critical GIS scholarships.

References

- Caquard, S. 2015. Cartography III: A Post-representational Perspective on Cognitive Cartography. *Progress in Human Geography* 39 (2):225-235.
- Cope, M., and S. Elwood. 2009. *Qualitative GIS: A Mixed Methods Approach*. London: SAGE.
- Cresswell, T. 2012. Nonrepresentational theory and me: notes of an interested sceptic. *Environment and Planning D* 30:96-105.
- Hawkins, H. 2017. *Creativity*. New York: Routledge.

kanarinka. 2006. Art-Machines, Body-Ovens and Map-Recipes: Entries for a Psychogeographic Dictionary. *Cartographic Perspectives* 53 (Winter):24-40.

Kitchin, R., J. Gleeson, and M. Dodge. 2013. Unfolding mapping practices: a new epistemology for cartography. *Transactions of the Institute of British Geographers* 38 (3):480-496.

O'Rourke, K. 2013. *Walking and Mapping: Artists as Cartographers*. Cambridge, Massachusetts: The MIT Press.

Schuurman, N. 1999. Critical GIS: Theorizing an emerging discipline. *Cartographica* 36 (4):1-109 (Monograph 53).

KAGES Ethics Council

Ethics in Academia and the Workplace in the United States



윤혜진
(Hyejin Yoon)
Associate Professor
Department of Geography
University of Wisconsin –
Milwaukee



반효원
(Hyowon Ban)
Professor
Department of Geography
California State University, Long
Beach



심선희
(Sunhui Sim)
Professor
The Department of Geography
University of North Alabama

Introduction

This is the first article of the series about ethics in academia and the workplace in the United States (U.S.) by the KAGES Ethics Council (referred to as Council hereafter). In this article, we would like to introduce the

definition, various cases of Title IX, and how to enforce it at higher education institutions in the U.S. Understanding Title IX helps you know your rights and duties to protect you and your colleagues in KAGES as researchers, students, and supervisors. The Council hopes that these articles encourage all the KAGES members to find appropriate information, discuss, and act properly in your workplace and your program.

Title IX of the Education Amendments of 1972 (Title IX) is a human rights law that was formed by the U.S. Department of Education in 1972 to protect people from discrimination based on sex. All the educational organizations and programs in the 50 states, the District of Columbia, and the U.S. territories funded by the U.S. federal government adopt this law and are prohibited from discriminating based on sexual differences. In many cases, people narrow down the definitions of Title IX just about sexual violence, but Title IX includes a broader context. It concerns what happens in the relationships among students, student-athletes, employees, and employers based on power relations. Title IX is related to all academic affairs and research in higher education, such as admission and scholarship. Furthermore, any discrimination based on sex is not allowed, for example, harassment and violence against LGBTQI students (U.S. Department of Education, n.d.).

All higher education institutions in the U.S. maintain an office for managing Title IX to prohibit sex-based discrimination. In addition, the universities have required every employee to regularly participate in training for Title IX. Understanding Title IX and awareness of the students' and employees' right to protect and advocate themselves are important and enable the academic community to become sound and healthy. In the following sections, we will introduce the cases of sexual harassment in academia. Furthermore, we will explain what resources and services the KAGES Ethics Council could provide to the KAGES members regarding Title IX issues.

Cases of Sexual Harassment in Academia

A report (2018) entitled "Sexual Harassment of Women: Climate, Culture, and Consequences in Academic Sciences, Engineering, and Medicine" was published in 2018. It highlights the prevalence of sexual harassment in academia and lays out what constitutes sexual harassment and comprehensive solutions.

According to the report, the environment where sexual harassment occurs often is 1) male-dominated environment, with men in positions of power and

authority, 2) organizations tolerant of sexually harassing behavior (e.g., failing to take complaints seriously, failing to sanction perpetrators, or failing to protect complainants from retaliation), 3) hierarchical and dependent relationships between faculty and their trainees (e.g., students, postdoctoral fellows, and residents), 4) isolating environments (e.g., labs, field sites, and hospitals) in which faculty and trainees spend considerable time.

The most prevalent form of sexual harassment found in the literature and survey data is the put-down or gender harassment. It includes comments, cartoons, jokes, gestures, and other insults to members of one sex/gender group (Clancy, 2020). Harassment can go beyond the stereotypical order, such as a senior man targeting a woman in a junior position. Counterpower or bottom-up harassments can happen. One such takes place in the classroom.

"One female teaching assistant described writing on the blackboard while students "talked loudly about my butt." Another recalled a student who would not stop "referencing my looks and touching my ears."

An online article (2021) shared stories of the body: anecdotes of academia, sexual harassment and abuse" (Goddard College, 2021).

"A male professor asked me out on a date. I said no. He began to stare at me whenever he saw me on campus. I felt uncomfortable; I began to find new routes around campus. Finally, I walked into his office and said, "You have to stop." To his credit, he did."

Some examples of anti-LGBTQI harassment can be found at the University of North Alabama website:

"A student discloses he's gay during a seminar discussion. Leaving class, a group of students calls him a homophobic slur, and one bumps him into the wall. A professor witnesses this, but does nothing. Over the next month, the harassment worsens. The student goes to the professor after missing several lectures out of fear, but nothing is done and the absences aren't excused." (UNA website, 2021)

These are a few examples from the survey and literature. You can find more stories on sexual harassment in academia from online articles and blogs, scientific journal articles, and the Academic Sexual Misconduct Database.

Resources and Services by the KAGES Ethics Council

Recently, an increasing number of organizations related to geospatial and environmental sciences started to provide their members with professional development opportunities regarding ethics and equity. The following lists some of them:

- American Association of Geographers (AAG)
 - Statement on Professional Ethics, Endorsed by the Council of the American Association of Geographers ([link](#))
 - Conduct Policy Violation Complaint Form ([link](#))
 - JEDI (Justice, Equity, Diversity, Inclusion) in Action: “JEDI is listening: Justice, Equity, Diversity and Inclusion in Geography, A Listening Session” ([link](#))
- American Geographical Society (AGS) ([link](#))
- National Council for Geographic Education (NCGE) ([link](#))
- National Geographic Society ([link](#))
- University Consortium for Geographic Information Science (UCGIS) ([link](#))
- Urban and Regional Information Systems Association (URISA)'s Professional Education Committee (PEC) ([link](#))

The KAGES Ethics Council believes that ethics training for all KAGES members is necessary. The Council plans to provide various services related to the ethical issues to KAGES members. Please feel free to contact the Council at ethics@kages.org for any inquiries. The Council will treat all submissions as confidential. Please visit the Council's webpage [here](#).

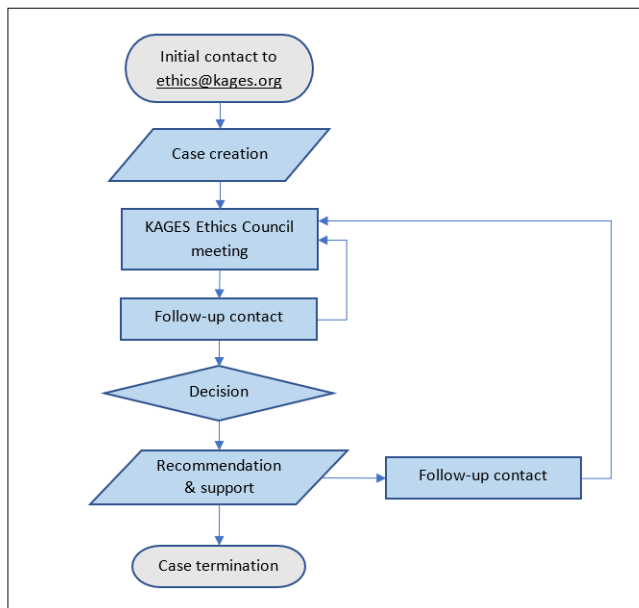


Figure 1. A tentative process of the counselling service by the KAGES Ethics Council

Figure 1 shows a tentative process of the counselling by the Council. Confidentiality will be kept at each step of the process.

The following resources may be useful to have a better understanding about the ethical issues.

- “Harassment resources”, including Nationwide Resources, etc. by American Sociological Association ([link](#))
- “A Beginner’s Guide for Addressing Sexual Harassment in Academia” by Needhi Bhalla ([link](#))
- “How Associations Can Help End Sexual Harassment” by Allison Torres Burtka ([link](#))
- “Office of Title IX”: related policies, processes, and trainings by University of North Alabama ([link](#))
- “Title IX Resources” by University of North Alabama ([link](#))
- “Title IX and Sex Discrimination” by the U.S. Department of Education ([link](#))
- “#MeToo in Professional Associations: Harassment, Gender, and Power” by Kathrin Zippel ([link](#))

References

- American Sociological Association, Harassment resources. American Sociological Association. <https://www.asanet.org/diversity-equity-inclusion/harassment/harassment-resources>
- Bhalla, N. A Beginner’s Guide for Addressing Sexual Harassment in Academia. Edge for Scholars. <https://edgeforscholars.org/a-protocol-for-addressing-sexual-harassment-and-assault/>
- Burtka, A. T. (2018). How Associations Can Help End Sexual Harassment. The Center for Association Leadership. https://www.asaecenter.org/resources/articles/an_magazine/2018/march-april/how-associations-can-help-end-sexual-harassment
- Clancy, K. B. H., L. M. Cortina, and A. R. Kirkland, 2020: Use science to stop sexual harassment in higher education. Proc. Natl. Acad. Sci. USA, 117, 22614–22618, <https://doi.org/10.1073/pnas.2016164117>
- Division Of Student Affairs. (2021). Office of Title IX. University of North Alabama. <https://una.edu/titleix/index.html>
- Division Of Student Affairs. (2021). Title IX Resources. University of North Alabama. <https://una.edu/titleix/resources/index.html>

Goddard College, 2021, accessed on Dec. 6, 2021,

<https://www.goddard.edu/goddard-mfa-writing/academia-sexual-harassment-and-a-slice-of-buttered-toast-with-tea/>

Libarkin, J. (2020). Academic Sexual Misconduct Database. Retrieved MONTH/DAY/YEAR, from

<https://academic-sexual-misconduct-database.org>

National Academies of Sciences, Engineering, and Medicine 2018. Sexual Harassment of Women: Climate, Culture, and Consequences in Academic Sciences, Engineering, and Medicine. Washington, DC: The National Academies Press.

<https://doi.org/10.17226/24994>

Office for Civil Rights. (2021). Title IX and Sex Discrimination. U.S. Department of Education.

https://www2.ed.gov/about/offices/list/ocr/docs/tix_dis.html

KAGES Awards & Scholarships

KAGES Student Paper Award

The Student Paper Award aims to recognize high-quality student articles published in the fields of Geography, Geospatial Technologies, and Environmental Sciences. The 2022 KAGES Student Paper Awards are sponsored by the Korean Geographical Society (KGS), the Korean-American Scientists and Engineers Association (KASEA), and the Korea-America Association for Geospatial and Environmental Sciences (KAGES). The maximum amount per awardee is \$500.

2022 KAGES Student Paper Awardees

- 안윤정 Yoonjung Ahn (Florida State University)
- 조명식 Myungsik Cho (Michigan State University)
- 김규식 Kyusik Kim (Florida State University)

2022 KAGES scholarship awards were sponsored by KGS (The Korean Geographical Society, 대한지리학회, <http://www.kgeography.or.kr/>).

Student Leadership Award

Students are recognized for their contributions to KAGES and our academic community during the academic year.

- 안윤정 Yoonjung Ahn (Florida State University)

Sim Travel Award

Dr. Sim, Sun Hui is currently a faculty member in the Geography Department at the University of North Alabama. Through her generous sponsorship, “Sim Student Travel Award” was established in 2010 to provide financial assistance to graduate students in the research field of geography, geospatial technologies and environmental Sciences. This scholarship is particularly designed to help meet the costs of travel to the Annual Meetings of the Association of American Geographers.

2022 Sim Travel Awardees

- 안윤정 Yoonjung Ahn (Florida State University)
- 허소정 Sojung Huh (Texas State University)
- 김규식 Kyusik Kim (Florida State University)

Due to the cancellation of in-person AAG meeting in 2022, the award will be given for their in-person participation in 2023 AAG and KAGES annual meeting as student member.

Special thanks to 2022 KAGES scholarship awards review committee:

- Dr. Youngsang Kwon (권영상), University of Memphis
- Dr. Yoo Min Park (박유민), East Carolina University
- Dr. Jinhyung Lee (이진형), Western University
- Dr. Jin-Kyu Jung (정진규), University of Washington Bothell
- Dr. Young Rae Choi (최영래), Florida International University

KAGES 2022 Annual Meeting

이번 2022 년 KAGES 총회는 AAG New York Annual Meeting 과 더불어 온라인으로 진행이 됩니다.

2022 년 KAGES 총회는 다음과 같은 내용으로 구성됩니다: 1) 지난 1년 간 KAGES 활동 보고, 2) 학생회원들에게 장학금 수여, 3) KAGES 임원 선출선거 및 선거결과발표 등 입니다. KAGES 총회를 비롯하여, KAGES 에서 개최하는 Young Korean Geographers Forum I & II, 멘토링의 자세한 일정과 zoom 미팅 링크는 아래와 같습니다.

날짜: 2022 년 2 월 27 일 일요일 (한국 기준 2 월 28 일 월요일)

- **Young Korean Geographers Forum I:** 3:40 – 5:00 pm (EST) | 5:40 – 7:00 am (KST), AAG Virtual Room 25
- **Young Korean Geographers Forum II:** 5:20 – 6:00 pm (EST) | 7:20 – 8:00 am (KST), AAG Virtual Room 26
- **KAGES Mentoring Session:** 6:00–6:45pm (EST) | 8:00 – 8:45 am (KST), Zoom [LINK](#) (Meeting ID: 948 0224 6383)
- **KAGES General Meeting:** 7:00–8:00pm (EST) | 9:00 – 10:00 am (KST), Zoom [LINK](#) (Meeting ID: 986 7041 2152)

올 2022 년 KAGES 총회에 참석해 주시어 뜻깊은 시간을 함께 해주시기를 바라겠습니다.

Join KAGES!

KAGES 의 회원으로 초대합니다! 아직 회원 가입을 하지 않으셨나요? [회원 가입/리뉴 신청서](#)를 작성하셔서 support@kage.org 로 보내주세요.

회비 납부 역시 Paypal 로 쉽게 하실 수 있습니다 (<http://www.kages.org/season2/join-membership/>). 2022–2023 년 회원 자격은 2023 년 6 월까지 유지됩니다. 많은 참여를 부탁드립니다.

IJGER

International Journal of
GEOSPATIAL AND ENVIRONMENTAL RESEARCH

Editor-in-Chief
Dr. Woonsup Choi (최운섭)
University of Wisconsin-Milwaukee

The International Journal of Geospatial and Environmental Research (IJGER) is an international journal sponsored by the Korea–America Association for Geospatial and Environmental Sciences (KAGES). As a non-profit organization, KAGES fosters scientific interactions between Korea and the USA for Korean or Korean–American students, scientists, and professionals in the geospatial–technical and environmental science fields. As part of its mission, KAGES launched IJGER to provide a forum for discussion between its members and researchers in the field. KAGES has the ultimate authority on the ownership and management of IJGER. IJGER welcomes contributions that fit our aims and scope from anywhere by anyone in the world.

Submit your manuscript to IJGER now! If you have any questions, feel free to contact the chief editor of IJGER, Dr. Woonsup Choi (choiw@uwm.edu).

Current Issue: Volume 8, Number 3 (2021)

After a normal review process, four research articles and a short communication have been published in this issue:

- *The Spatial Patterns of Pluvial Flood Risk, Blue–Green Infrastructure, and Social Vulnerability: A Case Study from Two Alaskan Cities* by Arun K. Pallathadka, Heejun Chang, and Idowu Ajibade
- *Short-term Slope Changes on Dokdo Island Identified from Ground-based 3D LiDAR Data* by Jihyun Kang, Hyejin Kim, Jaegum Park, and Hyunchul Shin
- *Characterizing Clustering Models of High-dimensional Remotely Sensed Data Using Subsampled Field-subfield Spatial Cross-validated Random Forests* by Andrew B. Whetten
- *Exploring Micro-scale Spatiotemporal Dynamics of Restaurant Entrepreneurship with Public Open Data* by Chanwoo Jin and Alan T. Murray
- *Measuring Spatio-Temporal Responses to Hurricane Matthew Employing TwitGis* by Seungil Yum

IJGER Early Career Paper Award

This award supports research of the members of KAGES who are either graduate students or early career scholars. The award is sponsored by Dr. Hyejin Yoon in the Department of Geography at the University of Wisconsin–Milwaukee. Total amount of \$900 will be awarded to three early scholars who publish their research in IJGER for three years from 2021.

KAGES Grant & Sponsorship

KAGES Student Affiliated Group Mini-Grant

The KAGES Student Affiliated Group Mini-Grant program is designed to encourage networking and personal growth among Korean KAGES student members who are affiliated with an academic institution in the U.S. and Canada. This grant program is sponsored by the Korea–America Association for Geospatial and Environmental Sciences (KAGES), a non-profit organization whose mission includes:

- Supporting student members to develop their career success through education and research;
- Supporting members to develop research, teaching, and services;
- Promoting interactions between South Korea and the U.S. in geospatial technology and environmental science fields.

KAGES welcomes any proposals/activities that address the overarching mission of the organization. Activities may include but are not limited to inviting an expert for a talk to their meeting, organizing a workshop, or meeting for their professional development. Each student group can apply multiple proposals/activities. KAGES will support up to \$300 annually per group. The total number of awards will be determined later. A student group may reapply for funding for the following years. For further information, please visit <http://www.kages.org/season2/kages-student-affiliated-group-mini-grant/>.

The KAGES Sponsorship Program

The KAGES Sponsorship program aims to support professional activities and events led by KAGES members for their career development and leadership. This program is designed to continue the organization's mission of supporting members' research, teaching, and services and promoting interactions between South Korea and the United States in geospatial and environmental science fields. KAGES welcomes a project proposal that expands the overarching mission of the organization. This sponsorship program will support up to \$500 for all approved projects. The funds will vary by project and are based on availability in the KAGES budget. KAGES members must be the key personnel in the proposed project. Potential projects could include but are not limited to a professional development workshop, a professional networking event, or an academic seminar.

Key conditions are as follows:

- The project should aim to reach out to a broader scholarly community.
- KAGES sponsorship must be acknowledged during project activities.
- The sponsorship is intended to help KAGES members who are organizers of professional activities and events, not mere participants in the activities and events.
- The project has another funding source to achieve its goals (preferred but not required).

For further information, please visit <http://www.kages.org/season2/category/activities/kages-sponsorship-program/>.

Members' News

Scholarly Accomplishments

- **반효원 (California State University, Long Beach): Award:** *2022-Spring CSULB Research, Scholarship, and Creative Activity - Higher Education Emergency Relief Fund (RSCA-HEERF) Awards* for Reassigned Time, Visualization of Uncertain Ocean Feature Boundaries using GIScience and Virtual Reality. Granted by College of Liberal Arts, California State University, Long Beach; *2022-2023 CSULB Research, Scholarship, and Creative Activity (RSCA) Awards* for Reassigned Time, Exploring anti-Asian incidents in the urban areas: Mapping Asian female students' emotions using qualitative and spatio-temporal approaches. Granted for Spring 2023 semester by College of Liberal Arts, California State University, Long Beach.
- **박진우 (Texas A&M University): Degree completion:** Received Ph.D. (December 2021); **New position:** Postdoctoral research associate at University of Illinois at Urbana-Champaign, Department of Geography & Geographic Information Science; **Publication:** Park, J., Kang, J.-Y., Goldberg, D. W., & Hammond, T. A. (2021). Leveraging temporal changes of spatial accessibility measurements for better policy implications: A case study of electric vehicle (EV) charging stations in Seoul, South Korea. *International Journal of Geographic Information Science*; Park, J., & Goldberg, D. W. (2021). A review of recent spatial accessibility studies that benefitted from advanced geospatial information: Multimodal transportation and spatiotemporal disaggregation. *ISPRS International Journal of Geo-Information*, 10(8).
- **이지은 (University of Northern Colorado): Award:** Fellowship for the PI Academy (University of Northern Colorado) reassigned time in 2022; **Grant:** *Teaching Sustainability in the 21st Century: with web-based geotechnologies and maps as the language of the planet* (University of Northern Colorado); *The Golden Compass: securing success of foreign national women geospatial scientists in their career, leadership, and life in the U.S.* (UCGIS-TRLEIS Carolyn Merry Mini-Grant);

Publication: Ramirez, I. J., Lee, J. (2021). Deconstructing the Spatial Effects of El Niño and Vulnerability on Cholera Rates in Peru: Wavelet and GIS Analyses. *Spatial and Spatio-temporal Epidemiology* DOI: <https://doi.org/10.1016/j.sste.2021.100474>

- **홍유인 (Penn State University): Degree completion:** Received Ph.D. (August 2021); **Publication: Hong, Y.** (2021) Regionally divergent roles of the South Korean state in adopting improved crop varieties and commercializing agriculture (1960–1980): a case study of areas in Jeju and Jeollanamdo. *Agriculture and Human Values*, vol. 38(4), pages 1161–1179.

About KAGES

Mission

As a non-profit organization, the mission of KAGES is to foster the following for Korean or Korean-American students, scientists and professionals in the geospatial-technical and environmental science fields:

- Support for students developing their career successfully through education and research
- Support for members developing research, teaching and services
- Promoting interactions between South-Korea and USA in geospatial technology and environmental science fields

Bylaws

- The KAGES Bylaws was revised and approved by the KAGES Board Members on Friday, April 9, 2021 and the revised version is accessible in PDF format from the following link: KAGES Bylaws. (http://www.kages.org/season2/wp-content/uploads/2015/04/KAGES-Bylaws-Final_5th_revision_2021.pdf)

Organization

- KAGES was founded on 11/17/2008 with eight founding board members:

Dr. Gi-Choul Ahn	Dr. Yeong-Hyun Kim
Dr. Heejun Chang	Dr. Sun Yurp Park
Dr. Jinmu Choi	Dr. Jeong Chang Seong
Dr. Jongnam Choi	Dr. Changjoo Kim

Officers (July 2021 – June 2022)

President: Dr. Injeong Jo
 Vice President: Dr. Misun Hur
 Secretary: Dr. Hoseop Cha
 Treasurer: Dr. Hosuk Lee

2021–2022 Board members

- Dr. Hoseop Cha (Park University): Secretary; Public Relation Committee
- Dr. Bumseok Chun (Texas Southern University): Technical Support
- Dr. Kelly Huh (Cal Poly Pomona): Past President (2019–2020); Research Committee
- Dr. Misun Hur (East Carolina University): Vice President; Communication Committee, Public Relation Committee
- Dr. Injeong Jo (Texas State University): President (2021–2022); Legal, International Relation, and Public Relation Committee
- Dr. Jeon-Young Kang (Kongju National University): International Relation Committee
- Dr. Hosuk Lee (University of North Georgia): Treasurer; Communication Committee (Membership)
- Dr. Jieun Lee (University of Northern Colorado): Newsletter; Communication Committee
- Dr. Sanglim Yoo (Ball State University): Scholarship & Award Committee
- Dr. Hyejin Yoon (University of Wisconsin–Milwaukee): Past President (2020–2021); Legal Committee, Career Development Committee
- Yoonjung Ahn (Florida State University): Student Board Member; Communication Committee; Technical Support Committee

Newsletter editor

Dr. Jieun Lee (University of Northern Colorado)

Membership Benefits

- Members can actively involve in opportunities by KAGES to network with your professional peers for the fields of geospatial and environmental science.
- Members are eligible for a variety of KAGES awards and can apply grants by KAGES.
- Members have a voting right for KAGES elections.
- Each KAGES member is also to become a member for KSEA–Georgia Chapter during KAGES membership.
- For renewal of membership, or join the KAGES, please visit the KAGES website at <http://www.kages.org> or email at support@kages.org Twitter: [@KagesOfficial](https://twitter.com/KagesOfficial)